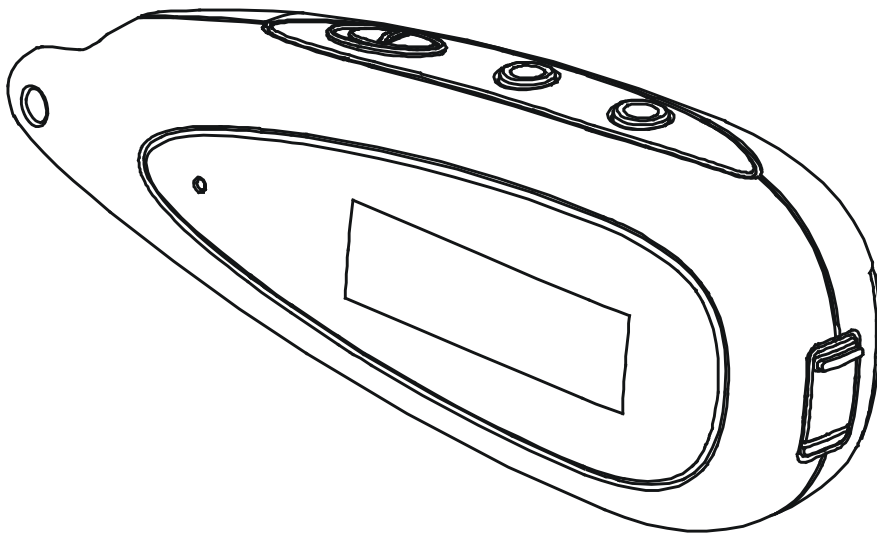


*** Hello Kitty® ***

©1976, 2008 Sanrio Co., Ltd.

HELLO KITTY 1GB DIGITAL AUDIO PLAYER



**OWNER'S MANUAL
KT2045**

**PLEASE READ THIS OPERATING MANUAL COMPLETELY BEFORE OPERATING
THIS UNIT AND RETAIN THIS BOOKLET FOR FUTURE REFERENCE**

SAFETY INFORMATION



Equipment tested for compliance as a complete unit.

This device complies with Part 15 of the FCC Rules. Operation is subject to the following two conditions: (1) this device may not cause harmful interference, and (2) this device must accept any interference received, including interference that may cause undesired operation.

NOTE: This equipment has been tested and found to comply with the limits for a Class B digital device, pursuant to Part 15 of the FCC Rules. These limits are designed to provide reasonable protection against harmful interference in a residential installation. This equipment generates, uses and can radiate radio frequency energy and, if not installed and used in accordance with the instructions, may cause harmful interference to radio communications.

However, there is no guarantee that interference will not occur in a particular installation. If this equipment does cause harmful interference to radio or television reception, which can be determined by turning the equipment off and on, the user is encouraged to try to correct the interference by one or more of the following measures:

- Reorient or relocate the receiving antenna.
- Increase the separation between the equipment and receiver.
- Connect the equipment into an outlet on a circuit different from that to which the receiver is needed.
- Consult the dealer or an experienced radio/TV technician for help.

Warning: Changes or modifications to this unit not expressly approved by the party responsible for compliance could void the user's authority to operate the equipment.

IMPORTANT NOTE: To reduce the risk of fire or shock hazard, do not expose this player to rain or moisture.



ATTENTION: TO REDUCE THE RISK OF ELECTRIC SHOCK, DO NOT REMOVE THE COVER (OR BACK). THERE ARE NO USER-SERVICEABLE PARTS INSIDE. REFER SERVICING TO QUALIFIED SERVICE PERSONNEL.



In full power, continuous listening of player may damage the user's hearing.

Your player is a device that stores and plays multi-format digital audio files including MP3, WMA, and WAV files. Please read this manual carefully before using this product for the first time.

The descriptions and characteristics given in this document are given as a general indication and not as a guarantee. In order to provide the highest quality product possible, we reserve the right to make any improvement or modification without prior notice.

BEFORE YOU BEGIN

After purchasing and downloading music to your PC, you are now ready to move content to your player. To transfer the music, you must use Windows Media Player or the application recommended by the online music download service. (Note: Services and applications must be Windows Media audio-compliant and support Digital Rights Management.)

Computer System Requirements

- Pentium III 500MHz or higher recommended
- Macintosh iMac G3 or higher
- Windows Me, 2000, or XP
- Mac OS X Version 10.1.5 or higher
- Internet access
- 100MB free hard disk space for the software
- 64MB RAM (128 MB recommended)
- CD-ROM drive capable of digital audio extraction
- USB port (2.0 recommended)
- Sound card
- DRM works with Windows Media 10 or above

Warning: Use of this product is for your personal use only. Unauthorized recording or duplication of copyrighted material may infringe upon the rights of third parties and may be contrary to copyright laws.

Note :

Make sure the tracks are encoded in mp3 or Windows Media formats and supported bit rates.

Bit rates supported by player:

MP3 - 8 to 320 kbps

WMA - 5 to 192 kbps

Precautions for the Unit

- Do not use the unit immediately after transportation from a cold place to a warm place: condensation problem may result.
- Avoid shock to the unit especially during recording. Recorded data may be damaged.
- Do not store the unit near fire, places with high temperature or in direct sunlight.
- Do not operate or store unit in places with frequent static electricity or electrical noise (e.g. speaker, TV set).
- Clean the unit with a soft cloth or a damp chamois leather. Never use solvents.
- The unit must only be opened by qualified personnel.

Note: This unit may temporarily cease to function if subjected to electrostatic disturbance. To resume normal operation, it may be necessary to cycle the power off and back on or to remove and reinstall the batteries.

Caution

- Keep product out of direct sunlight. Exposure to direct sunlight or extreme heat (such as inside a parked car) may cause damage or malfunction.
- Do not expose to rain or moisture.

Caution While Driving

Use of headphones while operating an automobile or moving vehicle is not recommended and is unlawful in some states and areas. Be careful and attentive on the road. Stop operation of the unit if you find it disruptive or distracting while driving.

Important Battery Information

- When storing the unit, be sure to remove the battery because it may leak and damage the unit.
- Battery may leak electrolyte if inserted incorrectly, if disposed of in fire, or if an attempt is made to charge a battery not intended to be recharged.
- Discard leaky battery immediately. Leaking battery may cause skin burns or other personal injury.
- Do not charge batteries which are not intended to be recharged.
- Dispose of batteries, according to federal, state and local regulations.

Headphone Safety



Have a Blast- Just Not in Your Eardrums. Make sure you turn down the volume on the unit before you put on headphones. Increase the volume to the desired level only after headphones are in place.

- Do not play your headphone at a high volume. Hearing experts warn against extended high volume play.
- If you experience a ringing in your ears, reduce volume or discontinue use.
- You should use extreme caution or temporarily discontinue use in potentially hazardous situations. Even if your headphone is an open-air type designed to let you hear outside sounds, don't turn up the volume so high that you are unable to hear what is around you.

Insert battery into the player

1. To insert battery, open the battery door on back of unit.
2. Insert a "AAA" battery with polarities corresponding to the indications (+,-) on the compartment.
3. Close the door to the battery compartment.

Note: Refer to the power level indicator on display for battery level.

Replace with new battery when the indicator is empty.

Using Headphone

Insert phone plug into the phones jack () on the player for listening.

Connecting the Player to your Computer

Insert the small end of the provided USB cable into the socket on the unit tightly, then insert the large end to the socket of the computer.

Shielded cables must be used with this unit to ensure compliance with the Class B FCC limits.

Note:

- Once connected, your computer will assign a new drive letter "X"(X-Any alphabet that allocated by your computer) and be called "Removable Disk". Simply drag and drop music files from your music folder to this new folder.
- Secure music download files must be transferred to your player through Windows Media Player or the application recommended by the online music download service. Please visit the online music download service's website where you purchased your content from for more details on transferring secure music to your player. For more information on Windows Media Player, visit <http://www.microsoft.com/windows/windowsmedia>.

DRM

DRM (Digital Rights Management)

What is DRM? It stands for digital rights management, a technology used to protect digital products from copyright infringement. When a customer buys a DRM-protected music download, the download is encrypted specifically for that customer. To allow the customer to use the file on a separate MP3 player they must link the DRM enabled player to Windows Media Player 10 and link both applications. This allows the downloaded music file to then be used on a separate digital music player.

How to synchronize the DRM songs into your MP3 player?

1. Purchase DRM songs from the internet, and download them into your computer.
2. Playback the songs that you downloaded, if it plays, the download was successful. If not then you need to download again.
3. To use the DRM function, the computer OS must be Windows XP system SP2 or higher version, installed with Windows Media player 10 (or above) and have an active internet connection.
4. Connect the DRM MP3 player to your PC.

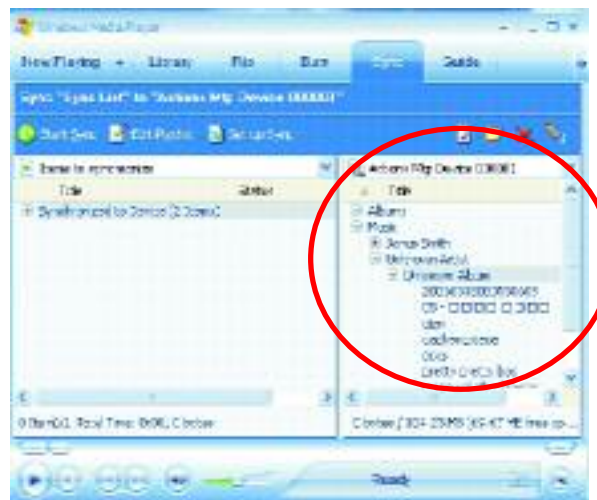
How to set your MP3 player DRM download?

1. Connect the player to your computer using the provided USB cable.
2. Launch Windows Media Player on the computer and select "SYNC tag". The software will automatically detect the player as a Media Player. (You may need to press the F5 button on the keyboard to find your player.)
3. Once your computer detects the player, it will display the following menu. You can now choose to synchronize your music automatically or manually. When Automatic is selected, Windows Media Player will automatically synchronize all the library music into the player or until the players memory is full.
4. For Manual, select "Manual" and click "Finish", it will display:
5. Add the songs that you want to synchronize into the Sync List.
6. Click "Start Sync".





7. The frame will display the synchronized songs.

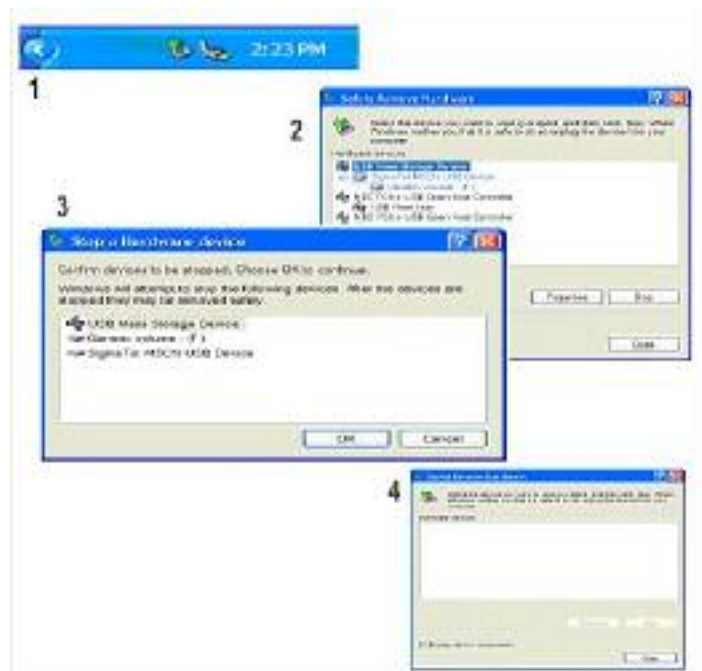


Removing the unit from the computer

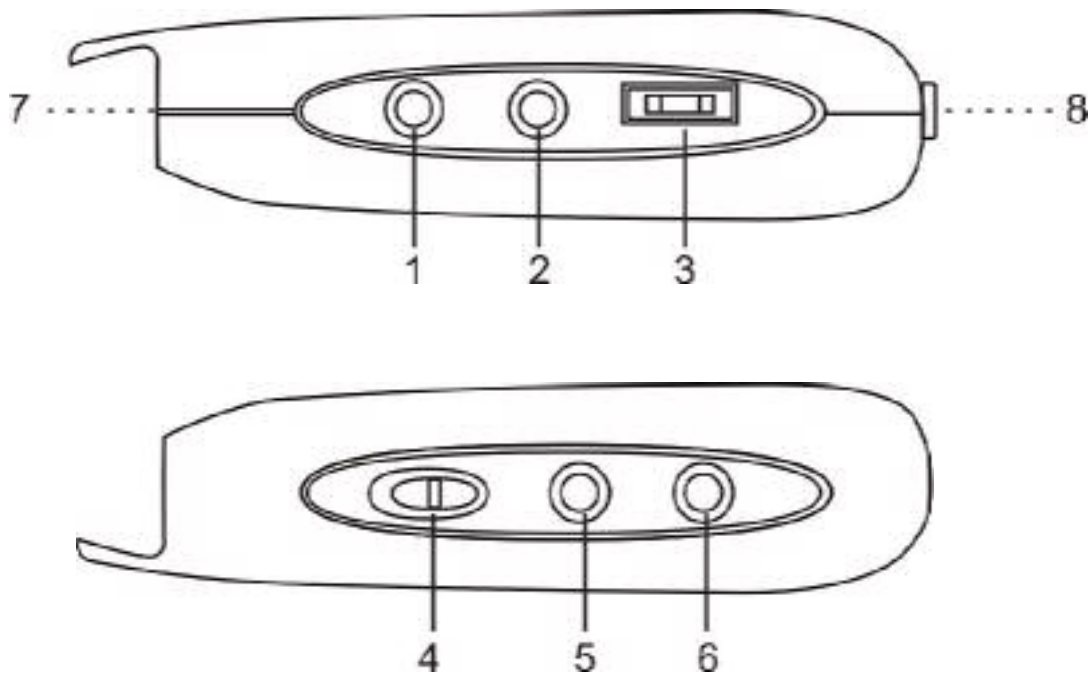
Note: Please follow these steps to avoid damaging the player or losing data.

1. Double-click on the "Safely Remove Hardware" icon (green arrow) in the system tray of your Windows desktop (see diagrams below for illustration).
2. Click stop in the "Remove Hardware Device" dialog window.
3. You will be asked which device you want to stop. Choose the player and click OK to continue.

4. The “Safely Remove Hardware” window will appear to confirm that it safe to remove the player. Click OK to continue.
5. Now you can safely disconnect the player from the computer.



CONTROL LOCATIONS



- | | |
|---|---|
| <ol style="list-style-type: none"> 1. POWER ON/OFF/PLAY/PAUSE/STOP BUTTON 2. REC/A-B BUTTON 3. MENU ◀◀/▶▶ BUTTON 4. HOLD SWITCH | <ol style="list-style-type: none"> 5. VOLUME – BUTTON 6. VOLUME + BUTTON 7. HEADPHONES JACK 8. USB SOCKET |
|---|---|

OPERATION

Press the **PLAY** button to turn the unit ON.

Press and hold the **PLAY** button to turn the unit OFF.

Warning: Do not turn the unit OFF when it is playing music. Otherwise any unsaved data will be lost.

Select Menu

1. Press the **PLAY** button to turn the unit ON and enter the music standby mode.
2. Press and hold the **MENU** button to enter the main menu.
3. Press the **PREVIOUS** ◀◀ or **NEXT** ▶▶ buttons to select the desired menu: Play Music, Voice, Record, Delete, Settings and About (memory status).
4. Press the **MENU** button to confirm your selection.

Play Music

1. Press the **PLAY** button to turn the unit ON and enter the music standby mode.
2. Press the **PLAY** button to start music playback. Icon “▶” appears on display.
Note: Use this button to pause the playing track. The icon “||” will then appear on the display. Press the **PLAY** button again to resume normal playback.
3. Press **NEXT** ▶▶ to skip forward to the next track or press repeatedly to skip forward several tracks. Press the **PREVIOUS** ◀◀ to skip backwards to the previous track or press ◀◀ repeatedly to skip backwards several tracks. Press and hold the **PREVIOUS** or **NEXT** buttons to search quickly within a track.
4. To adjust the volume level, press the **VOLUME +/-** buttons.
5. In play or pause mode, press the **PLAY** button for two seconds to enter STOP mode. Music playback stops. Press the **PLAY** button again to resume.

Voice (Play record File)

1. Press the **MENU** button for 2 seconds to enter the main menu.
2. Press the **PREVIOUS** ◀◀ or **NEXT** ▶▶ buttons to select “VOICE” mode, then press the **MENU** button to confirm. Press the **PLAY** button to start playing a recorded file.
3. Press the **PREVIOUS** ◀◀ or **NEXT** ▶▶ buttons to search for your desired recorded files.
4. Press the **MENU** button for two seconds to enter the main menu.

Record

1. Press the **PREVIOUS** ◀◀ or **NEXT** ▶▶ buttons to select “RECORD” mode. Press the **MENU** button to confirm and start a recording.
2. Press the **rec/a-b** button to pause the recording. Press **rec/a-b** again to resume a recording.
3. Press the **PLAY** or **MENU** button for two seconds to enter the stop recording mode and return main menu

Delete a file

1. In the stop mode, press the **MENU** button for two seconds to enter the main menu.
2. Press the **PREVIOUS** ◀◀ or **NEXT** ▶▶ buttons to select the “Delete” icon. Press the **MENU** button to enter “Delete” mode.
3. Press the **PREVIOUS** ◀◀ or **NEXT** ▶▶ buttons to select “yes” and press the **MENU** button to confirm delete.

Note: “Read-only” music file cannot be deleted.

Settings

1. Press the **MENU** button for two seconds to enter the main menu.
2. Press the **PREVIOUS** ◀◀ or **NEXT** ▶▶ buttons to select the “Setting” icon. Then press the **MENU** button to confirm and enter the submenu.

- **Equalizer**

Press the **PREVIOUS** ◀◀ or **NEXT** ▶▶ buttons to select the equalizer mode: and choose from Normal, Rock, Jazz, DDB, POP or Classic. Press the **MENU** button to confirm your selection.

- **Play mode**

Press the **PREVIOUS** ◀◀ or **NEXT** ▶▶ buttons to select the desired play back mode choose from Normal, Repeat one, Repeat All, Random or Random All.

Note:

Random: Playback will stop after all tracks have been randomly played.

Random All: Random play continuously.

- **Contrast**

Press the **PREVIOUS** ◀◀ or **NEXT** ▶▶ buttons to adjust the LCD contrast. Press the **MENU** button to confirm your setting.

- **Backlight**

Press the **PREVIOUS** ◀◀ or **NEXT** ▶▶ buttons to select the backlight time: from 0 secs, 5 secs, 10 secs, 20 secs, 30 secs, 40 secs, 50 secs and 60 secs. Press the **MENU** button to confirm your selection.

- **Auto off (Power set)**

Press the **PREVIOUS** ◀◀ or **NEXT** ▶▶ buttons to select the desired time for auto power-off: from disable, 1 mins, 2mins, 5 mins, 10 mins. Press the **MENU** button to confirm your selection.

- **Records (Record set)**

Press the **PREVIOUS** ◀◀ or **NEXT** ▶▶ buttons to select Sample.(8000Hz or 11025Hz) “Encode” format is set IMADPCM and Source is set to microphone. Press the **MENU** button to confirm your selection.

- **Language**

Press the **PREVIOUS** ◀◀ or **NEXT** ▶▶ buttons to select your desired language, then press the **MENU** button to confirm selection.

Exit

Returns to the last menu.

About memory size

1. Press the **MENU** button for two seconds to enter the main menu.
2. Press the **PREVIOUS** ◀◀ or **NEXT** ▶▶ buttons to select the “about” icon, then press the **MENU** button to enter and check the total memory of the player and also the available memory capacity.

A-B repeat (Only available in music play back menu or voice menu)

To repeat a sequence between two points A and B, press the rec/ a-b button at the beginning of the sequence that you want to repeat. Then press the rec/ a-b button again at the end of sequence. The sequence is then played repeatedly until you press the rec/ a-b button to resume normal playback.

Hold

Slide the HOLD switch to the arrowhead direction to lock the player. The lock icon will appear on the display. This deactivates all the button functions and eliminates the possibility of accidentally pressing buttons. Slide the HOLD switch to the opposite position to unlock all the buttons and the lock icon then disappears.

Lyrics

This player supports a lyrics function with music playback.

Note:

1. Lyric file format should be *.LRC.
2. Lyric file name should be same as the song's name.

For example:

Song name: Jay-Sky.mp3

Lyric file name: Jay-Sky.lrc

3. Lyric files should be saved in the same folder as the song's.

TROUBLE SHOOTING

Symptom	Cause	Solutions
Press PLAY but no display.	<ol style="list-style-type: none">1. No battery in the battery compartment.2. Battery is out of power.	<ol style="list-style-type: none">1. Insert the battery.2. Replace with a new battery.
No sound.	<ol style="list-style-type: none">1. Low volume or no music files inside the memory.2. Battery is out of power.3. MP3/WMA/WAV music files are damaged.	<ol style="list-style-type: none">1. Adjust the volume.2. Replace with a new battery.3. Download other music files.
Cannot play the MP3/WMA file that is made by user.	Player only supports playback of compressed audio files in MP3/WMA format, please do not download non-standard audio files into the player.	Re-download standard MP3/WMA files
No function on buttons.	HOLD is switched to the arrowhead direction.	Slide HOLD switch to the opposite direction to unlock.

TECHNICAL SPECIFICATION

Bit rate: 8~320Kbps

Contrast of LCD: 0-10

Signal-to-noise ratio: >80(1kHz)

USB port: USB2.0 full speed

ID3 Tag display with Lyrics, blue backlight

Memory size: 1GB

MP3 / WMA (DRM9)

Operation conditions: humidity <85%, 14°F ~ 104°F

Battery life: About 8 hrs

SERVICE

Please refer to the instructions on the enclosed warranty card for returning your unit for service. When returning the unit, please remove batteries to prevent damage to the unit in transit and/or from possible leakage. We are not responsible for batteries returned with the product or for the cost of replacement.

Distributed by:

SPECTRA Merchandising International, Inc.

Chicago Industry Tech Park

4230 North Normandy Avenue

Chicago, IL 60634, U.S.A.

For Customer Service, please call 1-800-777-5331. Please have model number ready.

Printed in China
© 1976, 2008 Sanrio Co., Ltd.